

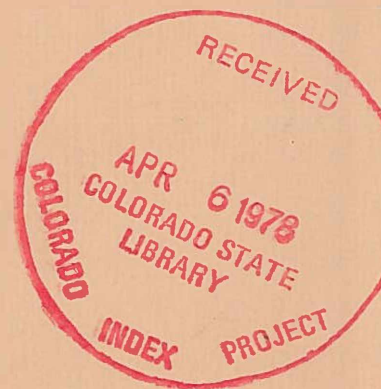
NR 6/125. 10/1978

C-2

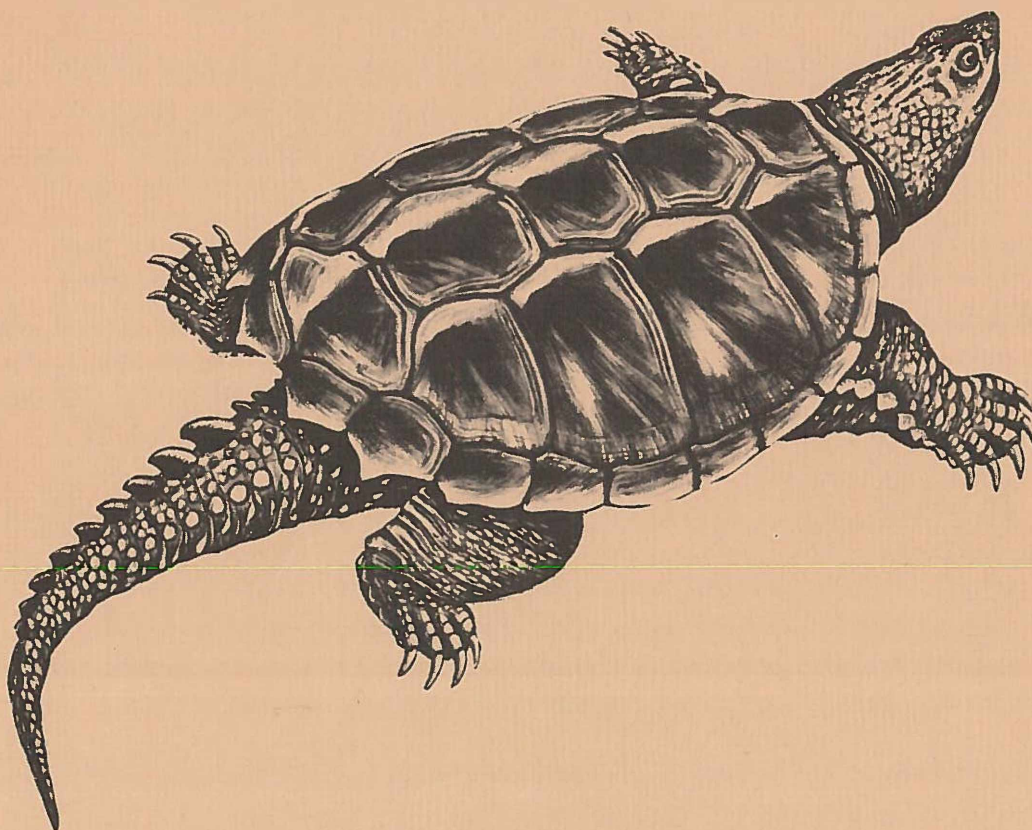
COLORADO STATE PUBLICATIONS LIBRARY
NR6/125.10/1978 c.2 local
Langlois, David/Colorado reptile and amp



3 1779 00035 9176



COLORADO REPTILE & AMPHIBIAN DISTRIBUTION LATILONG STUDY







COLORADO
REPTILE AND AMPHIBIAN
DISTRIBUTION LATILONG STUDY

Records as of January 1, 1978

Editor: David Langlois

Send inquiries about obtaining copies to:

Nongame Section
Colorado Division of Wildlife
6060 Broadway
Denver, CO 80216

CONTRIBUTORS

Applegarth, John	P.O. Box 91, Durango, Colorado 81301
Holland, Richard L.	1855 Garland Lane, Boulder, Colorado 80302
Horst, Mary	4423 E. Bailes Place, Denver, Colorado 80222
Langlois, David	6060 Broadway, Denver, Colorado 80216
Livø, Lauren	715 Miller Court, Lakewood, Colorado 80215
Romeo, Chuck	801 Dahlia #2, Denver, Colorado 80220
Soltesz, Kenneth	Denver Zoological Foundation, City Park, Denver, CO 80205
Somers, Preston	Fort Lewis College, Durango, Colorado 81301
Spencer, A. W.	Fort Lewis College, Durango, Colorado 81301

ACKNOWLEDGMENTS

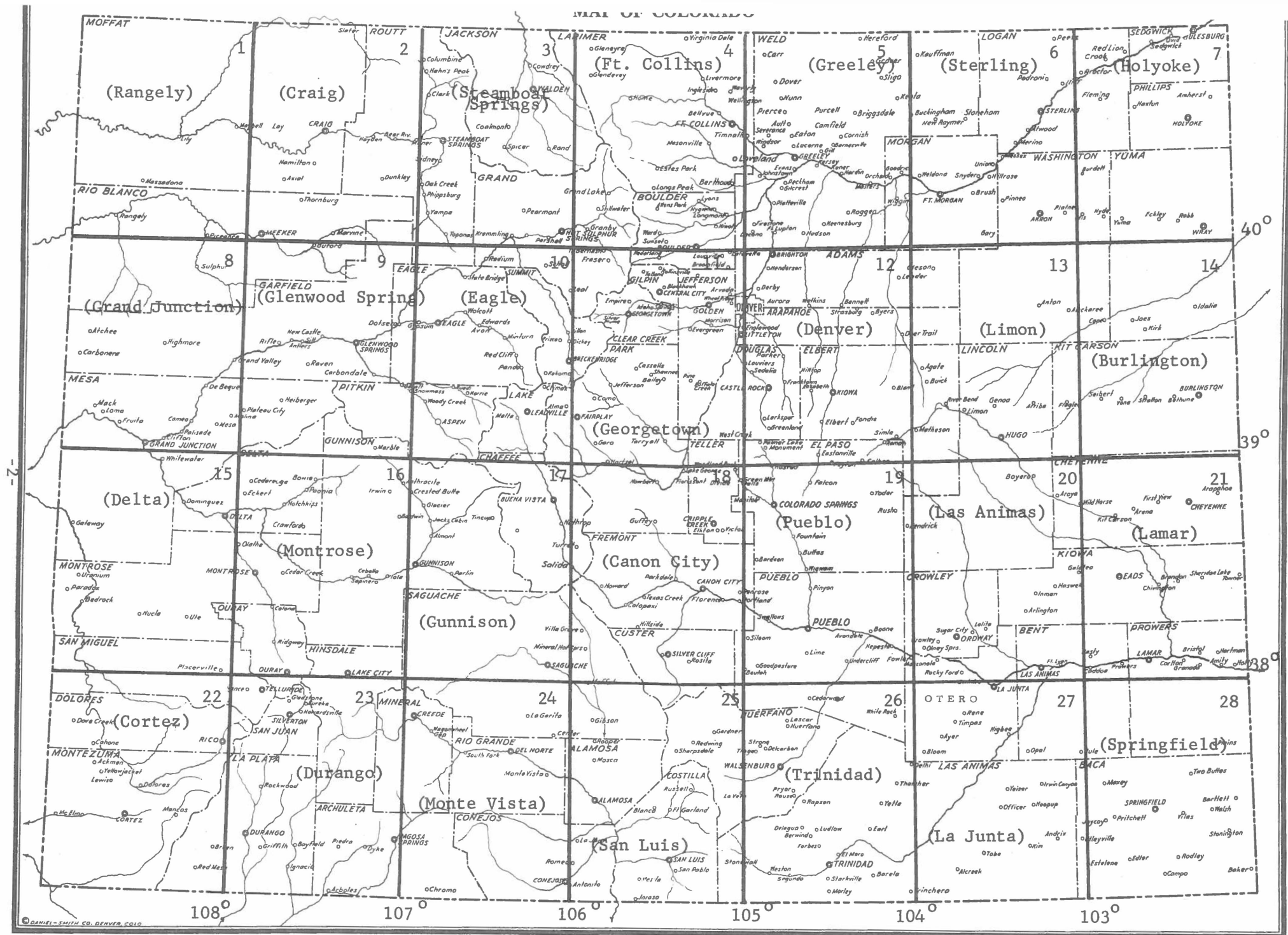
The snapping turtle illustration on the cover was prepared by Kent Pendleton; the artwork is the property of the Colorado Division of Wildlife. Special thanks is given to the Colorado Herpetological Society for their help in preparing this document. Many thanks are extended to the contributors who submitted the records used herein.

INTRODUCTION

This document is a summary of available knowledge about the distribution, abundance, and habitat preferences of the reptiles and amphibians of Colorado. The information is presented via a "latilong" mapping system which uses lines of latitude and longitude to divide Colorado into 28 regions or blocks. On the attached species sheets, the dashes correspond to the latilong blocks and represent a map of Colorado. The reader can find details about a species in each block by noting the corresponding habitat, abundance, and status codes. A short species synopsis accompanies most entries.

This format has at least three advantages over existing mapping systems. First, it presents a large amount of information in relatively few pages. Second, it uses a coordinate system which is understood on a national and international basis. Finally, this system is readily computerized which allows easy retrieval of the stored information.

A total of 89 species and varieties of herptiles have been reported for Colorado. All of the information in this document has been presented as it was submitted. For several species the data is incomplete; the system only reflects what has been reported for a particular species. Hopefully, publication of these apparent unknowns will stimulate the submission of unreported information and also serve as a guide to choosing future studies. Appendix I provides a form for reporting new information on latilong status and/or abundance and habitat preferences.



LATILONG MAPPING SYSTEM CODES

Three categories of codes are used to report information. They are: STATUS codes, HABITAT types, and ABUNDANCE relationships.

1. STATUS: The symbols listed below are used to indicate the status of a species in each latilong block. Collectively they also show distribution.
 - B - Resident: Breeding population with definite evidence of reproduction such as eggs, larvae, or juveniles. Specimens or photographs document occurrence.
 - b - Very Likely Resident: Observer strongly suspects species is present. Difficult to collect and/or find evidence of reproduction.
 - A - Accidental: Less than three records of sightings or occurrence as a result geographically displaced, escaped pets.

2. HABITAT: If a species is found only in marshes, the code would be Ms. But if it occurs in all types of aquatic habitat, the code would be Aq. Either the specific or the general code was used, but not both.

GL - Grassland:

- Sg - Shortgrass prairie (dominated by buffalo grass or blue grama; e.g., Pawnee Nat'l Grassland, cactus grassland around Pueblo).
- Bg - Bunch grass, (dominated by species like little bluestem; e.g., Yuma sandhills).
- Mm - Mountain meadows, parks, and semi-desert grasslands of the Western Slope.
- HA - Habitat alteration areas, like crested Wheat Grass.

Ag - Agricultural areas:

- Cr - Croplands
- Or - Orchards
- Sb - Shelter belts, dwellings, and tree farms.

Aq - Aquatic:

- In - Intermittent or temporary plains streams, mountain tributaries, rain pools, marshes, ponds, stock tanks and ponds or irrigation ditches.
- Pl - Permanent streams or rivers in broad valleys and plains with low gradient and silt, sand, or gravel bottoms, i.e. South Platte River below Greeley.
- Mt - Permanent mountain or foothill streams or rivers with steep gradients and sand, gravel, or rubble bottoms, i.e. Poudre River near Rustic.
- Sp - Spring-fed seeps and small creeks with permanent flow.
- Ms - Marshes, wetlands, swampy river bottoms, or lake and reservoir shorelines where rooted aquatic plants occur.
- L - Open water zones or permanent lakes, reservoirs or ponds.

D - Deciduous Habitat:

- R Riparian, flood plain, stream and lakeside vegetation; usually cottonwoods, willows, tamarisk, and alder, and including the subalpine willow thickets (those below timberline).
- As - Aspen

S - Shrub/Brush:

- Sc - Scrub oak, mountain mahogany, etc.
- DS - Desert Shrub (like saltbush, greasewood, etc.; e.g., San Luis Valley).
- Sa - Sagebrush, Rabbitbrush

CF - Coniferous Forest:

- Pp - Ponderosa pine
- Lp - Lodgepole pine
- SF - Spruce/Fir
- PJ - Pinyon/Juniper
- DF - Douglasfir
- C - Other coniferous trees, e.g., Colorado Blue Spruce, Bristlecone Pine, White Fir.

A - Alpine:

- T - Tundra
- AT - Alpine transition (willows or scrub conifers)

U - Urban (cities and towns, including city parks)

BA - Barren Habitat:

RC - Rocky cliffs or cliff faces

SD - Sand dunes, or soft sandy areas

GB - Gravel beds or alluvial deposits or rocky areas composed of rocks, boulders, cobbles, gravel, and scarce vegetation.

AF - Alkali flats

O - Other; explain.

3. ABUNDANCE: These terms are used to show the densities of various species in suitable habitats. They indicate relative abundance of adults, and do not indicate ephemeral abundance of larvae (tadpoles) which are subject to significant density fluctuations.

Ab - Abundant: At least 5 per acre, e.g. Boreal Chorus Frog or Leopard Frog in marshes. Can usually locate 10 specimens per day in suitable habitat.

FC - Fairly Common: At least 1 per 5 acres, e.g. Bullsnaek in agricultural areas. Can usually observe 1 per day in suitable habitat.

U - Unusual: Usually see no more than 3 per season, even in likely habitat.

Und - Undetermined: Not enough information available to classify.

An example should help clarify the use of the three codes to report information. Suppose you had noted a large breeding chorus and several egg masses of boreal chorus frogs in marshes near Grand Lake (block 4). You also found two chorus frogs on a sandbar in the intermittent Cimarron River (block 28). The entries would look like this:

BOREAL CHORUS FROG

	Breeding	Nonbreeding
Habitat: <u>B</u>	Ms	In
<u>A</u>	Ab	Und

To help orient map entries, a line was drawn through the map.

Note that the species may have different abundance codes in separate geographic areas as well as in breeding and nonbreeding habitats.

BOREAL TOADBufo boreas boreas

Mtns. from 7000' to 11000'

B	B	B			
B	B	B	B		
B	B				
B	B				

	Breeding	Nonbreeding
Habitat:	L,Ms,In	Aq,R,Mm, CF,T
Abundance:	Ab	FC

GREAT PLAINS TOADBufo cognatus

E. plains below 6500' and San Luis Valley-Arkansas River

Type locality: Ark. R.,Prowers, County

			B	B	B	B
			B	B	B	B
			B	B	B	B
			B		B	B

	Breeding	Nonbreeding
Habitat:	Aq	GL,Cr,Pl, Ms
Abundance:	Ab	FC

WESTERN GREEN TOADBufo debilis insidiator

Specimen from Trinidad in 1883; another 13 mi. S. of La Junta in 1964

					A	

	Breeding	Nonbreeding
Habitat:		
Abundance:		

RED-SPOTTED TOADBufo punctatus

SW and SE Colo. below 7000'; McElmo canyon-Yellow Jacket Cr. near Durango

B						
B						
B	B			B	b	B

	Breeding	Nonbreeding
Habitat:	Sp,In,Mt	PJ,DS,R, O
Abundance:	Und	Und

WOODHOUSE'S TOADBufo woodhousei woodhousei

All of Colo. below 7000' and San Luis Valley

B			B	B	B	B
B	B	B	B	B	B	B
B	B		B	B	B	B
B	B	B	B	B	B	B

	Breeding	Nonbreeding
Habitat:	Aq	Aq,R,PJ, GL,Ag,D, S,U,GB
Abundance:	Ab	FC

CANYON TREE FROGHyla arenicolor

SE Colo. on Mesa de Maya and W Colo. from John Brown canyon in Mesa, County

B						
B						
B						
					b	

	Breeding	Nonbreeding
Habitat:	Aq	Aq
Abundance:	Und	Und

BOREAL CHORUS FROGPseudacris triseriata maculata

Statewide except SE corner and San Juan basin in Montezuma, County

B	B	B	B	B	B	B
B	B	B	B	B	B	B
B	B	B		B		
B	B	B	B	B		A

	Breeding	Nonbreeding
Habitat:	Aq	Pl,Ms,GL, R,CF,U,S, Ag,A
Abundance:	Ab	Ab

BLANCHARD'S CRICKET FROGAcris crepitans blanchardi

Plains of NE Colo. in S. Platte R. and Republican R. drainages

				b	B
			b		B

	Breeding	Nonbreeding
Habitat:	Aq	Aq
Abundance:	Ab	FC

BULLFROGRana catesbiana

Introduced on plains of E and W
Colo. in permanent bodies of
water.

— — — B B B B
B — — B B B B
— — — B b —
— B — B — b B

	Breeding	Nonbreeding
Habitat:	Aq	Aq,R
Abundance:	FC	FC

LEOPARD FROGRana pipiens

Statewide up to 10,000'

B B B B B B B
B B B B B B B
B B B B B B B
B B B B B B B

	Breeding	Nonbreeding
Habitat:	Aq	Aq,R
Abundance:	Ab	Ab

ROCKY MOUNTAIN WOOD FROGRana sylvatica maslini

N. Platte R. and Laramie R.
drainages in Jackson, Larimer
and Grand Counties

— — B B — — —
— — — — — — —
— — — — — — —
— — — — — — —

	Breeding	Nonbreeding
Habitat:	Aq	R,Ms
Abundance:	Und	Und

PLAINS SPADEFOOTScaphiopus bombifrons

E plains and San Luis Valley

— — — B B B
— — — B B B
— — — B B B
— — B B B B B

	Breeding	Nonbreeding
Habitat:	In	Ms,GL,Sg, S
Abundance:	Ab	Und

WESTERN SPADEFOOTScaphiopus hammondi

W Colo. at low elevations;
SE Colo. in Cimarron R.
drainage

— — — — — — —
— — — — — — —
B — — B — — —
B B — — B B —

	Breeding	Nonbreeding
Habitat:	In	Sg,RC,R, GL,S
Abundance:	Ab	Und

GREAT BASIN SPADEFOOTScaphiopus intermontanus

Gypsum Gap

— — — — — — —
B — — — — — —
B — — — — — —
— — — — — — —

	Breeding	Nonbreeding
Habitat:	In	PJ,GL,S
Abundance:	Ab	Und

COUCH'S SPADEFOOTScaphiopus couchi

S of La Junta

— — — — — — —
— — — — — — —
— — — — — — —
— — — — B — —

	Breeding	Nonbreeding
Habitat:	In	
Abundance:	Ab	Und

BARRED TIGER SALAMANDERAmbystoma tigrinum mavortium

Plains of E Colo., W to mountains;
subspecific intergradation
between 6,000' and 8,000'

— — — B B B B
— — — B B B B
— — — B B B b
— — — B B B B

	Breeding	Nonbreeding
Habitat:	Aq	R,GL,L, Ms
Abundance:	Ab	Ab

BLOTCHED TIGER SALAMANDER

Ambystoma tigrinum melanostictum B B B B -- B
 NW Colo. and introduced in E. B B B B -- --
 Colo. near Wray -- -- -- -- --

	Breeding	Nonbreeding
Habitat:	Aq	L,R,Ms
Abundance:	Ab	Ab

ARIZONA TIGER SALAMANDER

Ambystoma tigrinum nebulosum B B B B -- B
 W Colo. and introduced in B B B B B -- --
 E Colo. near Wray B B B B B -- --
 B B B B -- B --

	Breeding	Nonbreeding
Habitat:	Aq	L,R,Ms
Abundance:	Ab	Ab

UTAH TIGER SALAMANDER

Ambystoma tigrinum utahense -- b -- -- --
 Questionable from Buffalo -- -- -- -- --
 Pass -- -- -- -- --

	Breeding	Nonbreeding
Habitat:		
Abundance:	Und	

COMMON SNAPPING TURTLE

Chelydra serpentina serpentina -- -- B B B B
 E plains in permanent bodies -- -- B B B B
 of water. -- -- B B B B
 -- -- B -- --

	Breeding	Nonbreeding
Habitat:	R	R,Aq
Abundance:	Und	FC

WESTERN PAINTED TURTLE

Chrysemys picta belli -- -- B B B B
 E plains in permanent bodies -- -- B B B B
 of water; Animas R. in SW -- -- B B B B
 Colo. -- B -- -- B

	Breeding	Nonbreeding
Habitat:	R,Ms	R,Aq
Abundance:	Und	FC

DESERT TORTOISE

Gopherus agassizi -- -- -- -- --
 Introduced E of Durango -- -- -- -- --
 -- A -- -- -- --

	Breeding	Nonbreeding
Habitat:		
Abundance:		

THREE-TOED BOX TURTLE

Terrapene carolina triunguis -- -- -- -- --
 Introduced E of Durango and -- -- -- -- A -- --
 in Denver -- A -- -- -- --

	Breeding	Nonbreeding
Habitat:		
Abundance:		

ORNATE BOX TURTLE

Terrapene ornata ornata -- -- B B B B
 E Plains in sandy areas; -- -- B B B B
 introduced in SW Colo. -- A -- B B B B
 A A -- -- B B

	Breeding	Nonbreeding
Habitat:	Sg,Bg,GL, R,Sa	SD,GL,S
Abundance:	Und	Und

WESTERN SPINY SOFTSHELL TURTLETrionyx spiniferus hartwegiE plains in South Platte R.,
Republican R., and Arkansas R.

-	-	-	B	B	B	-
-	-	-	B	b	-	B
-	-	-	-	b	B	-
-	-	-	-	B	-	-

	Breeding	Nonbreeding
Habitat:	R	Pl, Sp
Abundance:	Und	FC

YELLOW MUD TURTLEKinosternon flavascens flavascensE edge of Colo. in permanent
bodies of water

-	-	-	-	-	B
-	-	-	-	-	b
-	-	-	-	-	B
-	-	-	-	-	B

	Breeding	Nonbreeding
Habitat:	R	L, Ms
Abundance:	FC	FC

YELLOW-HEADED COLLARED LIZARDCrotaphytus collaris auriceps

W and SW Colo below 7,000'

B	B	-	-	-	-
B	-	-	-	-	-
B	B	-	-	-	-

	Breeding	Nonbreeding
Habitat:	PJ, GB, DS, Sa	Mm, GB, PJ, Sa, R, DS
Abundance:	Und	Und

EASTERN COLLARED LIZARDCrotaphytus collaris collaris

SE Colo. below 6,000'

-	-	-	-	-	-
-	-	-	-	-	-
-	-	-	B	-	-
-	-	-	B	B	B

	Breeding	Nonbreeding
Habitat:	GL, GB, PJ	GL, GB, PJ
Abundance:	Und	Und

LONG-NOSED LEOPARD LIZARDCrotaphytus wislizeni wislizeniColo. National Monument and
Four Corners area

B	-	-	-	-	-
B	-	-	-	-	-

	Breeding	Nonbreeding
Habitat:	PJ, DS, Sa	Sa, PJ, DS
Abundance:	Und	Und

SPECKLED EARLESS LIZARDHolbrookia maculata approximans

Extreme SW Colo.

-	-	-	-	-	-
-	-	-	-	-	-
b	-	-	-	-	-

	Breeding	Nonbreeding
Habitat:		
Abundance:	Und	Und

LESSER EARLESS LIZARDHolbrookia maculata maculataE plains below 6,500' and
SW of Cortez

-	-	-	B	B	B	B
-	-	-	B	B	B	B
-	-	-	-	B	B	B
-	-	-	-	B	B	B

	Breeding	Nonbreeding
Habitat:	Sa, GL, SD	Sa, GL, SD, R, PJ
Abundance:	FC	FC

TEXAS HORNED LIZARDPhrynosoma cornutum

SE Colo.

-	-	-	A	-	-
-	-	-	-	A	B
-	-	-	-	B	B

	Breeding	Nonbreeding
Habitat:	Sg	Sg
Abundance:	Und	Und

EASTERN SHORT-HORNED LIZARD

<u>Phrynosoma douglassi brevirostre</u>	--	--	--	B	B	--
Plains and foothills up to 7,000'	--	--	--	B	B	B
	--	--	--	B	B	B
	--	--	--	B	B	--

	Breeding	Nonbreeding
Habitat:	Sg,AF	Sg,AF,B,U
Abundance:	FC	FC

MOUNTAIN SHORT-HORNED LIZARD

<u>Phrynosoma douglassi hernandesi</u>	--	--	--	--	--	--
W and SW Colo. in broad, arid	B	--	--	--	--	--
river basins below 5,500'	B	--	--	--	--	--
	B	B	--	--	--	--

	Breeding	Nonbreeding
Habitat:	PJ	PJ
Abundance:	Und	Und

DESERT SHORT-HORNED LIZARD

<u>Phrynosoma douglassi ornatissimum</u>	B	B	--	--	--	--
Mtns. and hilly areas of SW	B	B	--	--	--	--
Colo.; Especially Missionary	B	B	--	--	--	--
Ridge in Big Bear Park between	B	B	B	B	--	--
10,200' and 10,800'	--	--	--	--	--	--

	Breeding	Nonbreeding
Habitat:	Sa,Sc,As, PJ,Mm	Sa,Sc,As, PJ,Mm
Abundance:	FC	FC

NORTHERN SAGEBRUSH LIZARD

<u>Sceloporus graciosus graciosus</u>	B	B	B	--	--	--
W Colo. below 8,000'	B	B	B	--	--	--
	B	B	--	--	--	--
	B	B	--	--	--	--

	Breeding	Nonbreeding
Habitat:	Sa,Sg,S	Sa,PJ,R, Mm,BA
Abundance:	FC	FC

TWIN-SPOTTED SPINY LIZARD

<u>Sceloporus magister bimaculosus</u>	--	--	--	--	--	--
Extreme SW Colo. in Montezuma,	--	--	--	--	--	--
County	--	--	--	--	--	--
	B	--	--	--	--	--

	Breeding	Nonbreeding
Habitat:	R,DS	GL,R,DS
Abundance:	Und	FC

NORTHERN PLATEAU LIZARD

<u>Sceloporus undulatus elongatus</u>	B	--	--	--	--	--
W Colo. below 7,000'	B	B	--	--	--	--
	B	B	--	--	--	--
	B	B	--	--	--	--

	Breeding	Nonbreeding
Habitat:	PJ,GB,DS, RC,Sa	GL,PJ,R, DS,RC,Sa
Abundance:	FC	FC

RED-LIPPED PLATEAU LIZARD

<u>Sceloporus undulatus</u>	--	--	B	B	--	--
<u>erythrocheilus</u>	--	--	B	B	--	--
E foothills, S. of Arkansas	--	--	B	B	B	B
R. and San Luis Valley	--	--	B	B	B	B

	Breeding	Nonbreeding
Habitat:	RC,PJ,Sc,R Pp,Sa,Sg	GL,RC,PJ, Pp,Sc,R
Abundance:	Ab	Ab

Type locality: 19 mi. E of

Model, Las Animas, County

NORTHERN PRAIRIE LIZARD

<u>Sceloporus undulatus garmani</u>	--	--	--	B	B	B
NE plains	--	--	--	B	B	--
	--	--	--	B	B	--
	--	--	--	B	B	--

	Breeding	Nonbreeding
Habitat:	GL,Sa,Sg	GL,Sa,Sg
Abundance:	Ab	Ab

SOUTHERN PLATEAU LIZARD

Sceloporus undulatus tristichus
Southern Archuleta County

—	—	—	—	—	—
—	—	—	—	—	—
—	—	—	—	—	—
B	B	B			

	Breeding	Nonbreeding
Habitat:	GB,Pp	RC
Abundance:	Und	Und

NORTHERN TREE LIZARD

Urosaurus ornatus wrighti
W border counties below 7,000'

<u>B</u>	<u>B</u>	—	—	—	—	—
<u>B</u>	<u>B</u>	—	—	—	—	—
<u>B</u>	<u>B</u>	—	—	—	—	—
<u>B</u>	<u>B</u>	—	—	—	—	—

	Breeding	Nonbreeding
Habitat:	PJ,DS,S	RC,PJ,R, DS,S
Abundance:	FC	FC

NORTHERN SIDE-BLOTCHED LIZARD

Uta stansburiana stanburiana
W edge of Colo. below 6,500'

$\frac{B}{B}$	—	—	—	—	—	—
$\frac{B}{B}$	$\frac{B}{B}$	—	—	—	—	—
$\frac{B}{B}$	—	—	—	—	—	—
$\frac{B}{B}$	$\frac{B}{B}$	—	—	—	—	—

	Breeding	Nonbreeding
Habitat:	PJ,GB,DS, S,RC	PJ,GB,DS, S,RC,R
Abundance:	Und	Und

PRAIRIE SIX-LINED RACERUNNER

Cnemidophorus sexlineatus
E plains

$$\begin{array}{ccc|ccc} _ & _ & _ & \underline{\underline{B}} & \underline{\underline{B}} & \underline{\underline{B}} & \underline{\underline{B}} \\ _ & _ & _ & \underline{\underline{B}} & \underline{\underline{B}} & \underline{\underline{B}} & \underline{\underline{B}} \\ _ & _ & _ & \underline{\underline{B}} & \underline{\underline{B}} & \underline{\underline{B}} & \underline{\underline{B}} \\ & & & \underline{\underline{B}} & \underline{\underline{B}} & \underline{\underline{B}} & \underline{\underline{B}} \end{array}$$

	Breeding	Nonbreeding
Habitat:	GL,Sa,PJ, Cr	GL,PJ,Sa, Cr,R,GB
Abundance:	Ab	Ab

CHECKERED WHIPTAIL

Cnemidophorus tessellatus
SE Colo. below 6,500'
Type locality: Confluence of
Arkansas R. and Fountain Cr. in
Pueblo County

-	-	-	-
-	-	-	-
-	-	B	B
-	-	B	B B B

	Breeding	Nonbreeding
Habitat:	R,DS,PJ,GB Sa,U	R,DS,PJ, GB,U,Sb, Sa
Abundance:	Und	Und

NORTHERN WHIPTAIL

Cnemidophorus tigris
septentrionalis
W edge of Colo. below 6,500'
Type locality: Una, Garfield
County

<u>B</u>	—	—	—	—	—
<u>B</u>	<u>B</u>	—	—	—	—
<u>B</u>	—	—	—	—	—
B					

	Breeding	Nonbreeding
Habitat:	DS,PJ,R,GB Sa	DS,PJ,R, GL,Sa
Abundance:	Und	Und

PLATEAU WHIPTAIL.

Cnemidophorous velox
W edge of Colo. below 7,000'
from Garfield County south

<u>B</u>	<u>B</u>					
<u>B</u>	<u>B</u>					
B	B					

	Breeding	Nonbreeding
Habitat:	PJ,R,DS,S	PJ,R,S
Abundance:	Und	Und

SOUTHERN MANY-LINED SKINK

Eumeces multivirgatus gaigeae
Central and western portions
of S. Colo.

—	—	—	—	—	—	—
—	—	—	—	—	—	—
B	B		B	B		

	Breeding	Nonbreeding
Habitat:	R,Pp,As	R,As,Pp, Mm
Abundance:	Und	Und

NORTHERN MANY-LINED SKINKEumeces multivirgatusmultivirgatus

NE plains

Type locality: Cow Cr.,

Larimer County

---	B	B	B	B
---		B	B	
---		B		

	Breeding	Nonbreeding
Habitat:	GL, Sa, Sb	GL, Sa, Sb
Abundance:	FC	FC

GREAT PLAINS SKINKEumeces obsoletus

Plains of E Colo.

---	b		B	

---		B	B	
---		B	B	

	Breeding	Nonbreeding
Habitat:	Sb, Sg, Sa	GL, R, Sb, Sa
Abundance:	Und	Und

KANSAS GLOSSY SNAKEArizona elegans blanchardi

Extreme E Colo. including

Yuma and Prowers Counties

---				B

---				B
---			B	B

	Breeding	Nonbreeding
Habitat:		Sg
Abundance:	Und	Und

EASTERN YELLOW-BELLIED RACERColuber constrictor flaviventris

E plains and foothills

---	B	B	B	B
---	B	B	B	B
---		B	B	B
---		B	B	B

	Breeding	Nonbreeding
Habitat:	Sg, Sc, Sb, Sa	Sb, Sc, Sa, GL
Abundance:	Und	Und

WESTERN YELLOW-BELLIED RACERColuber constrictor mormon

At lower elevations

B	---	---	---	---
---	---	---	---	---
---	---	---	---	---
---	---	---	---	---

	Breeding	Nonbreeding
Habitat:	Mm	Mm
Abundance:	Und	Und

PRAIRIE RINGNECK SNAKEDiadophis punctatus arnyi

SE Colo.

---	---	---	---	---
---	---	---	---	---
---	---	---	---	---
---		B		

	Breeding	Nonbreeding
Habitat:		
Abundance:	U	U

GREAT PLAINS RAT SNAKEElaphe guttata emoryiSE Colo. and central portions
of W Colo. at low elevations
in major river valleys

B	B	---	---	---
B	---	B	B	B
---	---	---	---	B

	Breeding	Nonbreeding
Habitat:	DS, Sa, Sb	DS, Sa, Sb, Cr
Abundance:	Und	Und

PLAINS HOGNOSED SNAKEHeterodon nasicus nasicus

E plains usually below 6,000'

---	B	B	B	B
---		B	B	B
---	B	B	B	B
---		B	B	B

	Breeding	Nonbreeding
Habitat:	GL, Sc	GL, Sc, Sb, SD, R
Abundance:	FC	FC

EASTERN HOGNOSED SNAKE

Heterodon platyrhinos
One University of Colorado
museum record

--- --
--- --
--- --
--- --

	Breeding	Nonbreeding
Habitat:		
Abundance:		

MESA VERDE NIGHT SNAKE

Hypsiglena torquata loreala
Extreme SW Colo. and Grand
Valley

B --- --
B --- --
B --- --
B --- --

	Breeding	Nonbreeding
Habitat:		
Abundance:	U	U

TEXAS NIGHT SNAKE

Hypsiglena torquata texana
SE Colorado

--- --
--- --
B --- --
B --- --

	Breeding	Nonbreeding
Habitat:		RC, Sg, R
Abundance:	U	U

CALIFORNIA KINGSNAKE

Lampropeltis getulus californiae

--- --
--- --
b --- --
b --- --

	Breeding	Nonbreeding
Habitat:	R?	R, Aq
Abundance:	Und	Und

SPECKLED KINGSNAKE

Lampropeltis getulus holbrooki

--- --
--- --
A --- --
A --- --

	Breeding	Nonbreeding
Habitat:		
Abundance:		

NEW MEXICO MILK SNAKE

Lampropeltis triangulum celaenops
SW Colo. and Mesa Verde
National Park

--- --
--- --
B B --- --
B B --- --

	Breeding	Nonbreeding
Habitat:	R, GB, Sc, PJ	R, Sc, PJ
Abundance:	Und	Und

WESTERN MILK SNAKE

Lampropeltis triangulum
gentilis
E plains and foothills below
8,000'

--- -- B B B B
--- -- B B B B
--- -- B B B B
--- -- B B --- --

	Breeding	Nonbreeding
Habitat:	R, Pp, Sg, Sc	R, Pp, GL, PJ, BA, Sc
Abundance:	FC	FC

UTAH MILK SNAKE

Lampropeltis triangulum taylori
W Colo. to the N of Montezuma
County below 7,000'; perhaps
from North Park

--- -- b --- --
B --- --
B B --- --
B B --- --

	Breeding	Nonbreeding
Habitat:		
Abundance:	Und	Und

WESTERN COACHWHIP

Masticophis flagellum testaceus
SE Colo. Type locality:
Confluence of Turkey Cr.
and Arkansas R. 12 mi. W
of Pueblo

—	—	—	—	—	B
—	—	—	—	—	B
—	—	B	B	B	B
—	—	—	B	B	B

	Breeding	Nonbreeding
Habitat:	R, Sa, HA	R, Sa, HA, Sg, PJ
Abundance:	Und	Und

DESERT STRIPED WHIPSNAKE

Masticophis taeniatus taeniatus
Extreme W Colo. below 7,000'

B	—	—	—	—	—
B	b	—	—	—	—
B	—	—	—	—	—
B	B	—	—	—	—

	Breeding	Nonbreeding
Habitat:	DS, PJ, R, S	R, PJ, S
Abundance:	Und	Und

NORTHERN WATER SNAKE

Nerodia sipedon sipedon
Permanent waters in E Colo.

—	—	B	B	B	B
—	—	B	B	—	—
—	—	—	b	B	B
—	—	—	—	—	—

	Breeding	Nonbreeding
Habitat:	R, Ms	Aq, R
Abundance:	FC	FC

WESTERN SMOOTH GREEN SNAKE

Opheodrys vernalis blanchardi
Foothills and mountains below
10,000'

—	—	B	—	—	—
—	—	B	B	—	—
—	B	—	B	—	—
B	B	b	—	—	—

	Breeding	Nonbreeding
Habitat:	R, PJ, Mm, Ms, Sc	R, PJ, Mm, U, Cr, Sc, Ms
Abundance:	Und	Und

SONORA GOPHER SNAKE

Pituophis melanoleucus affinis
Extreme S Colo. in Archuleta
County

—	—	—	—	—	—
—	—	—	—	—	—
—	B	b	—	—	—

	Breeding	Nonbreeding
Habitat:	GB	
Abundance:	Und	Und

GREAT BASIN GOPHER SNAKE

Pituophis melanoleucus
deserticola
W Colo. below 7,000'

B	B	—	—	—	—
B	—	B	—	—	—
B	B	—	—	—	—
B	B	—	—	—	—

	Breeding	Nonbreeding
Habitat:	PJ, DS, S, R	PJ, R, S, GL
Abundance:	FC	FC

BULLSNAKE

Pituophis melanoleucus sayi
E Colo. below 9,000' and
San Luis Valley

—	—	B	B	B	B
—	—	B	B	B	B
—	B	B	B	B	B
—	—	B	B	B	B

	Breeding	Nonbreeding
Habitat:	PJ, SD, GL, Sa, Sc	PJ, SD, GL, BA, Cr, Sc, Sa, R
Abundance:	FC	FC

TEXAS LONG-NOSED SNAKE

Rhinocheilus lecontei
tessellatus
SE Colorado

—	—	—	—	—	—
—	—	—	—	—	—
—	—	—	—	—	b
—	—	—	—	—	—

	Breeding	Nonbreeding
Habitat:		
Abundance:	Und	Und

GREAT PLAINS GROUND SNAKE

Sonora episcopa episcopa
Extreme SE Colorado

--- B ---

	Breeding	Nonbreeding
Habitat:		
Abundance:	Und	Und

RED-BELLIED SNAKE

Storeria occipitomaculata
Original record and
specimen destroyed.

--- A ---

	Breeding	Nonbreeding
Habitat:		
Abundance:		

PLAINS BLACK-HEADED SNAKE

Tantilla nigriceps nigriceps
E plains below 7,000'

--- B --- B
--- B --- B
--- B B B
--- B B B

	Breeding	Nonbreeding
Habitat:		R, RC, GL, Sc, Sa
Abundance:	Und	Und

UTAH BLACK-HEADED SNAKE

Tantilla utahensis
Grand Valley in Mesa County

B ---

	Breeding	Nonbreeding
Habitat:		
Abundance:	Und	Und

WESTERN BLACK-NECKED GARTER SNAKE

Thamnophis cyrtopsis cyrtopsis
Southern Colorado

B --- B
B --- B B

	Breeding	Nonbreeding
Habitat:		R
Abundance:	Und	Und

WANDERING GARTER SNAKE

Thamnophis elegans vagrans
Colo. below 10,500', excluded
from NE plains

B B B B
B B B B B
B B B B B b
B B B B B B b

	Breeding	Nonbreeding
Habitat:	Ms, Mm, R	Aq, Mm, GL, U, R, Sc
Abundance:	FC	FC

PECOS RIBBON SNAKE

Thamnophis proximus diabolicus
Extreme SE Colorado

--- A ---

	Breeding	Nonbreeding
Habitat:		
Abundance:		

WESTERN PLAINS GARTER SNAKE

Thamnophis radix haydeni
E plains and foothills generally
below 7,000'

--- B B B B
--- B B B B
--- B B B B
--- B B B

	Breeding	Nonbreeding
Habitat:	GL, U, Ms, Ag	GL, U, Ag, R, Sb, Cr
Abundance:	FC	FC

NEW MEXICO GARTER SNAKE

Thamnophis sirtalis ornatus
Tentative in Alamosa
County

---	---	---	---
---	---	---	---
---	---	---	---
---	A	---	---

	Breeding	Nonbreeding
Habitat:		
Abundance:		

RED-SIDED GARTER SNAKE

Thamnophis sirtalis parietalis
NE Colo. below 8,000'

---	B	B	B	B
---	B	B	---	---
---	---	---	---	---
---	---	---	---	---

	Breeding	Nonbreeding
Habitat:	R,Ms	R,Ag,Sg
Abundance:	FC	FC

NORTHERN LINED SNAKE

Tropidoclonion lineatum lineatum
NE foothills and SE Colo.

---	B	B	B	---
---	---	---	---	---
---	---	B	---	---

	Breeding	Nonbreeding
Habitat:	U,Sb,Sg	U,Sb,Sg
Abundance:	Und	Und

EASTERN DIAMONDBACK RATTLESNAKE

Crotalus adamanteus
Introduced in Bijou Cr.
drainage

---	---	A	---	---
---	---	---	---	---
---	---	---	---	---
---	---	---	---	---

	Breeding	Nonbreeding
Habitat:		
Abundance:		

WESTERN DIAMONDBACK RATTLESNAKE

Crotalus atrox
One record from Trinidad

---	---	---	---	---
---	---	---	---	---
---	---	A	---	---

	Breeding	Nonbreeding
Habitat:		
Abundance:		

MIDGET FADED RATTLESNAKE

Crotalus viridis concolor
Central portion of W Colo.

B	B	---	---	---
B	---	---	---	---
B	---	---	---	---
---	---	---	---	---

	Breeding	Nonbreeding
Habitat:	PJ,S,GL,RC GB	PJ,S,RC, R,GB
Abundance:	Und	Und

HOPI RATTLESNAKE

Crotalus viridis nuntius
Extreme SW Colo.

---	---	---	---	---
---	---	---	---	---
B	B	---	---	---

	Breeding	Nonbreeding
Habitat:	DS,GL	R
Abundance:	Und	Und

PRAIRIE RATTLESNAKE

Crotalus viridis viridis
E plains and foothills
and NW & SW corners

B	B	---	B	B	B	B
---	B	---	B	B	B	B
B	---	B	B	B	B	B
B	B	B	B	B	B	B

	Breeding	Nonbreeding
Habitat:	RC,PJ,GL, S,Pp	RC,PJ,GL, S,Pp
Abundance:	FC	FC

WESTERN MASSASAUGA

Sistrurus catenatus tergimimus

SE Colorado

---	---	b
---	---	b
---	---	B
---	---	B

	Breeding	Nonbreeding
Habitat:	Sg, Sa	Sg, Sa
Abundance:	Und	Und

---	---	---
---	---	---
---	---	---
---	---	---

	Breeding	Nonbreeding
Habitat:		
Abundance:		

---	---	---
---	---	---
---	---	---
---	---	---

	Breeding	Nonbreeding
Habitat:		
Abundance:		

---	---	---
---	---	---
---	---	---
---	---	---

	Breeding	Nonbreeding
Habitat:		
Abundance:		

---	---	---
---	---	---
---	---	---
---	---	---

	Breeding	Nonbreeding
Habitat:		
Abundance:		

---	---	---
---	---	---
---	---	---
---	---	---

	Breeding	Nonbreeding
Habitat:		
Abundance:		

---	---	---
---	---	---
---	---	---
---	---	---

	Breeding	Nonbreeding
Habitat:		
Abundance:		

---	---	---
---	---	---
---	---	---
---	---	---

	Breeding	Nonbreeding
Habitat:		
Abundance:		

APPENDIX I

DOCUMENTATION OF LATILONG STUDY CHANGES
FOR
THE COLORADO DIVISION OF WILDLIFE RECORDS

Species: _____;
(Common Name) (Scientific Name - If Known)

This information is solicited in order to supplement or correct data appearing in The Colorado Reptile and Amphibian Distribution Latilong Study (1978). This study was developed from contributions by field herpetologists throughout the state, and will maintain its validity only through a continuation of such contributions.

Latilong: _____ Previous Status: _____ Recommended Status: _____

Habitat Change: From _____ to _____

Abundance Change: From _____ to _____

BASIS FOR RECOMMENDATION(S)

Locality studied (Nearest town & county): _____

Observations which support your recommendation (give dates and numbers of herptiles and any other pertinent data):

Habitat in which observed:

Pertinent behavioral observations:

Name (Print): _____

Mailing Address: _____

Signature: _____

Return Form To:

Nongame Section
Colorado Division of Wildlife
6060 Broadway
Denver, CO 80216

LITERATURE CITED

- Brekke, E. B. No date. Wildlife and habitat inventory for Baca and Prowers Counties, Colorado. Rept. prepared for BLM Office, Canon City. 63 pp.
- Maslin, T. Paul. 1959. An annotated check list of amphibians and reptiles of Colorado. Univ. Colo. Studies, Biol. 6:i-vi, 1-98.
- Maslin, T. P. and M. Horst. 1973. A check-list of the amphibians and reptiles of Colorado. 6 pp. (mimeo).
- Smith, H. M., Maslin, T. P., and R. L. Brown. 1965. Summary of the distribution of the herpetofauna of Colorado. Univ. Colo. Press, Boulder, Colo. 52 pp.

